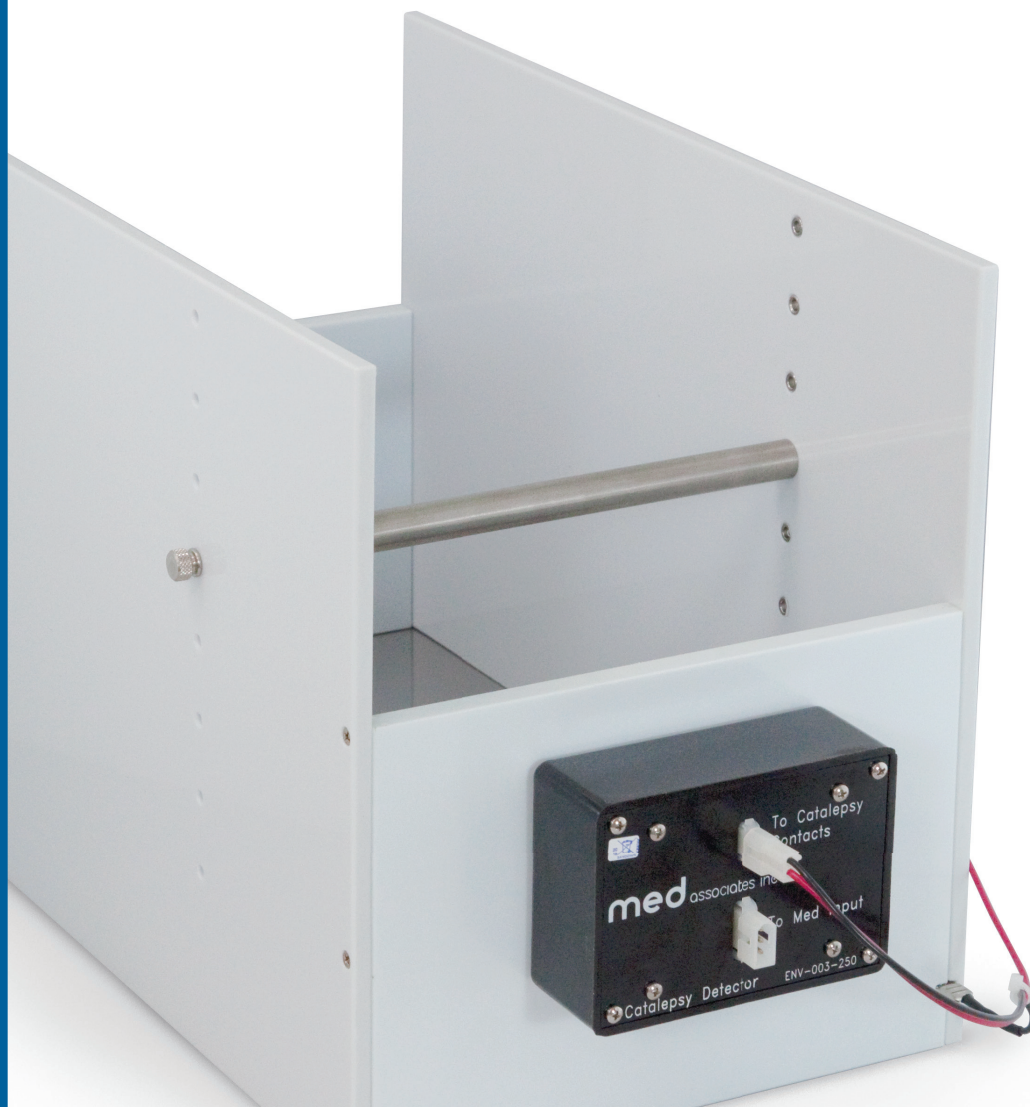
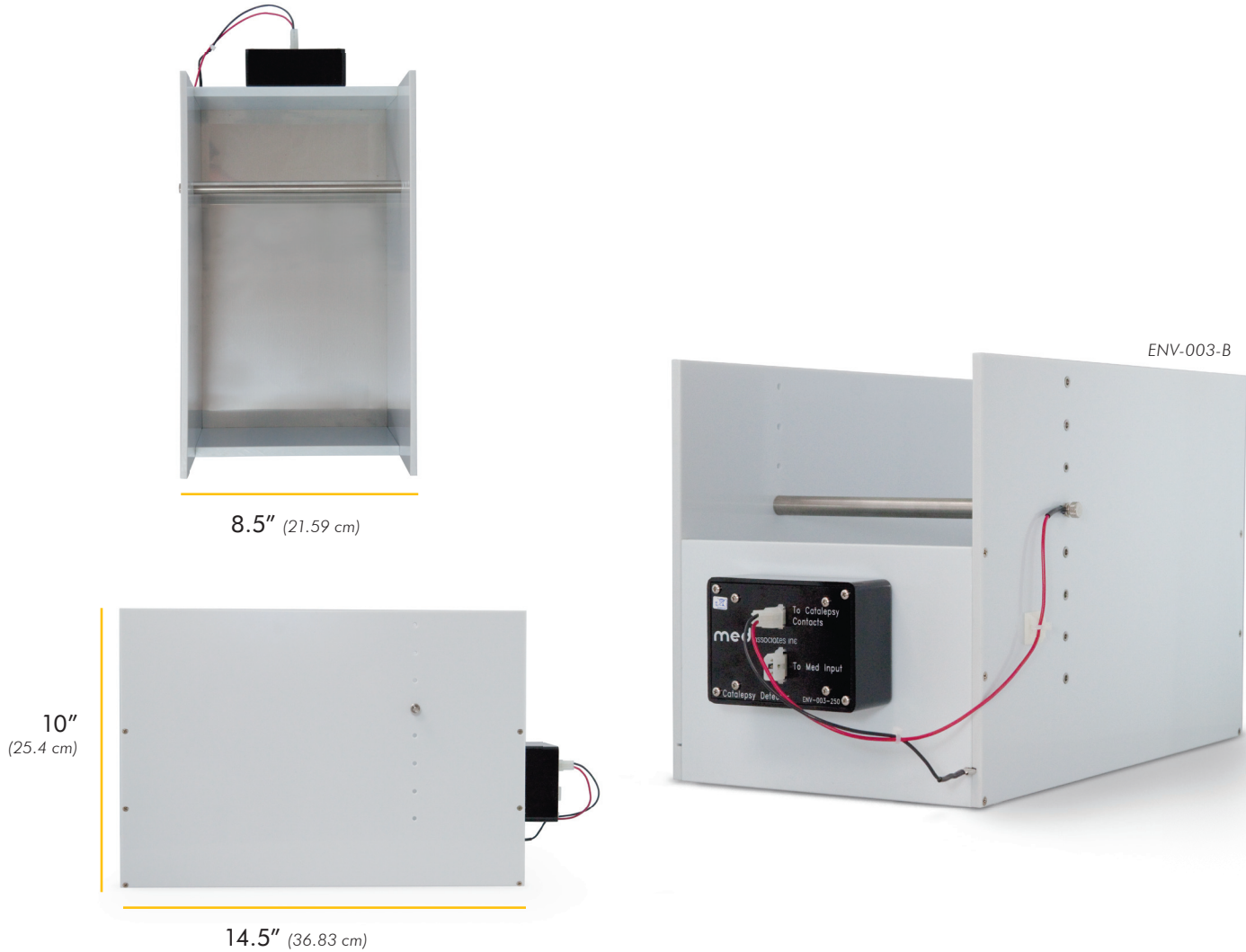


## CATALEPSY

Packages + Cage. ....	2
Software .....	3





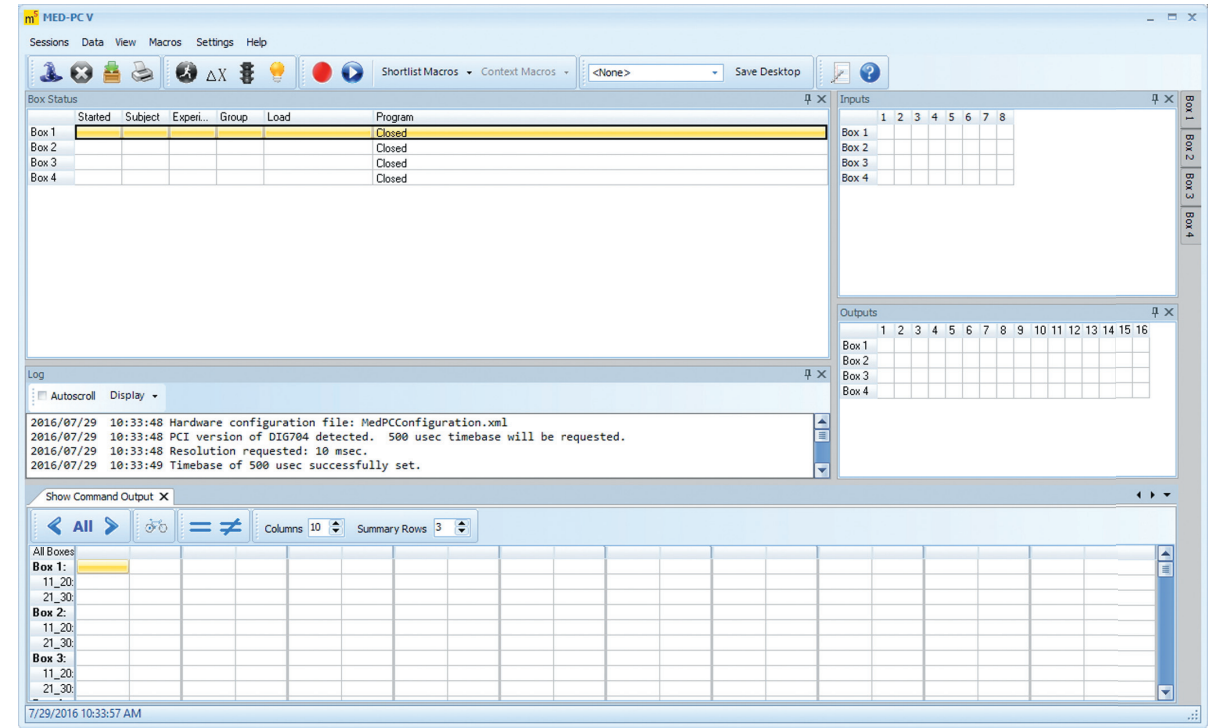
CATALEPSY TEST CHAMBER

ENV-003-B   MOUSE+RAT   CONTACT CIRCUIT

Conduct automated catalepsy measurements with rodents...*without a stopwatch!* The system automatically records the amount of time that the rat maintains at least one forelimb holding onto the bar.

- Eliminate the need for hand scoring, this automated system removes ambiguity and user-bias that confound human observer scores of catalepsy
- Simple, straight-forward design minimizes complications
- Data are collected into a table that can be analyzed in a spreadsheet or database application
- Electronic contacts are established using quick-disconnect type fixtures

- Easily add chambers to increase throughput
- Easy to clean and sanitize
  - The electric interface box can be removed so the entire chamber can be sanitized, and is cage washer safe (tested at 180° F with acid detergent)
- Includes stainless steel rod sizes
  - 1/2", 3/8", 1/4", and 3/16"
- Rod mount height:
  - Holes every 1", from 1.64" – 8.64" (4.17 – 21.95 cm)
- Custom chamber sizes are available



CATALEPSY PROTOCOL

SOF-700RA-19   MOUSE+RAT

- This Med-PC protocol accurately measures the time, in seconds, that a test subject maintains contact between the bar and the floor of our catalepsy box
  - Records total time that one or both forelimbs remain holding onto the elevated bar
- No stopwatches! A timer starts automatically when an animal grasps the bar to begin the trial, and stops when the animal breaks contact with the bar
- Define the number of subjects to be tested, number of trials per subject, and the maximum time allowed per trial
- Data file is automatically created and saved for statistical analysis
- Sort data by subject number and trial number
  - EXAMPLE: from the data table you can calculate the average catalepsy score in each subject over three trials per subject using a program like Microsoft® Excel

- User defined:
  - Number of subjects to run in a given session
  - Maximum trial time
  - Number of trials to run per subject

SUMMARY

- Select the box that the program is loaded in and issue the START command
- The trial will begin when it detects that the animal has made a connection between the bar and the floor with its feet
- Once the animal is detected, the program will run until the animal lets go of the bar or until the Max Trial Duration has been reached, whichever happens first
- Start the next trial, or save data in text file format of your choice



p: 802.527.9724 | f: 802.524.2110 | [www.med-associates.com](http://www.med-associates.com) | e: [sales@med-associates.com](mailto:sales@med-associates.com)