

OPEN FIELD ACTIVITY

STANDARD

IR Photobeam Test Packages	2-3
Sound Attenuating Cubicle Packages.	4-5
Components	6
Accessories	7-8
Software	9

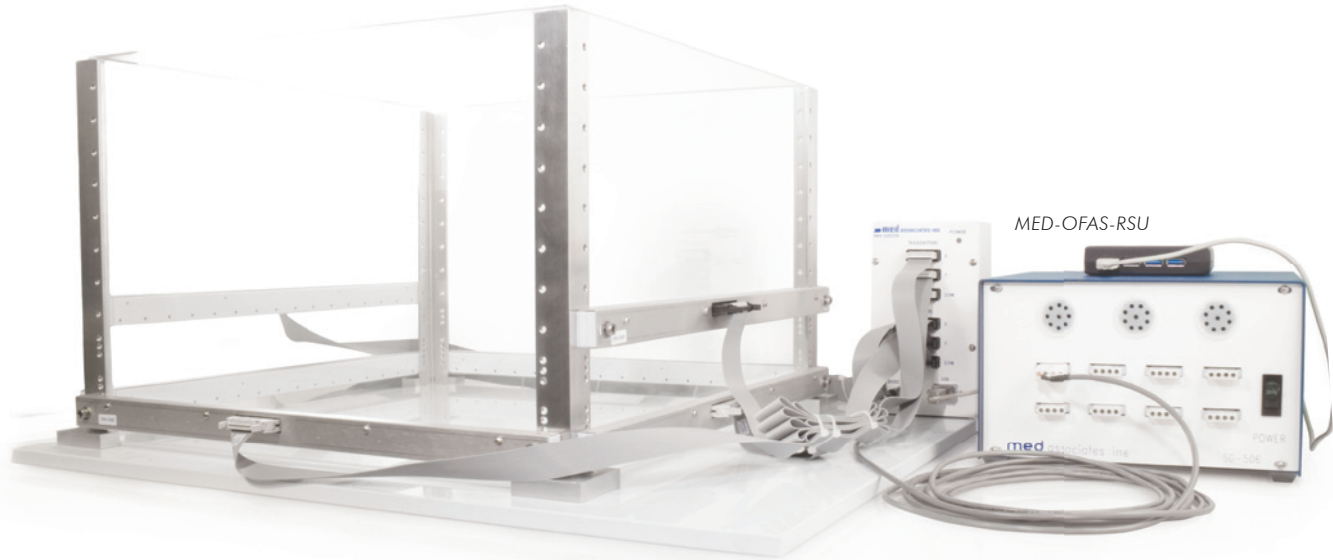
VIDEO TRACKING

Home Cage & Open Field Packages	10-11
-------------------------------------------	-------





MED-OFAS-510U



MED-OFAS-RSU

PACKAGE CONTENTS							
A = MED-OFAS-MSU B = MED-OFAS-510U				C = MED-OFAS-RSU D = MED-OFAS-515U			
#	SKU	DESCRIPTION	A	B	C	D	
1	ENV-510S	Seamless Open Field Arena for Mouse	A	B			
1	ENV-515S	Seamless Open Field Arena for Rat			C	D	
3	ENV-256R	IR Receiver Strip, 12" (30.48 cm) w/cable	A	B			
3	ENV-258R	IR Receiver Strip, 16.5" (41.91 cm) w/cable			C	D	
3	ENV-256T	IR Transmitter Strip, 12" (30.48 cm) w/cable	A	B			
3	ENV-258T	IR Transmitter Strip, 16.5" (41.91 cm) w/cable			C	D	
1	ENV-520USB	IR Controller, 48 Channel, USB	A	B	C	D	
1	DIG-801	USB Hub, 4 port	A		C		
1	SG-506	Regulated Power Supply (+/- 12 V, +5 V)	A		C		
1	CAB-USB-AM-BM-15	USB Cable, Type A-B, M/M, 15' (4.57 m)	A	B	C	D	
1	SG-520USB-1	IR Controller Power Cable	A	B	C	D	
1	SOF-812	Activity Monitor 7	A		C		

SEAMLESS OPEN FIELD
STARTER PACKAGE

MED-OFAS-MSU **MOUSE**
MED-OFAS-RSU **RAT**

These starter packages provide everything you need to get your experiments up and running, and offer flexibility not seen in competing systems. Our easy-to-install accessories and components open up the possibility of running different protocols in the future (such as place preference or light/dark) without the expense of purchasing new systems.

- Animal movement tracking using three 16-beam IR arrays located on both the X and Y axes for positional tracking and Z axis for rearing detection
- Easily expandable design for accommodating up to 16 chambers for increased throughput from one PC
- USB connection on 48 channel IR controller for connection to PC or USB hub
- Accessories include ventilated covers, two chamber place preferences, dark boxes, hole board inserts, sound attenuating cubicles, and more
- Seamless design is both easy to clean and swap out with spare arenas

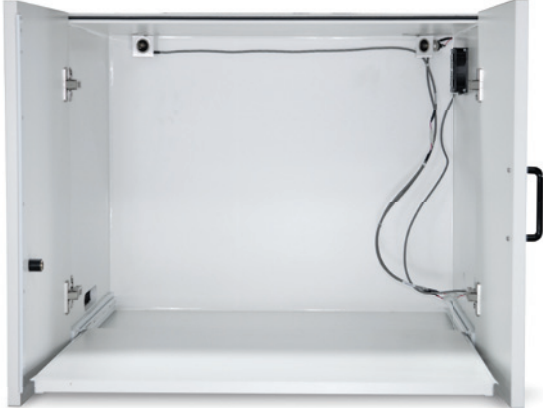
FULL ADDITIONAL TEST
CHAMBER

MED-OFAS-510U **MOUSE**
MED-OFAS-515U **RAT**

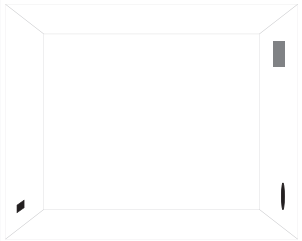
For expanding your system to up to 16 chambers for increased throughput from one PC.

- SAC sold separately, see Sound Attenuating Cubicle Package w/Pullout Shelf (MED-OFA-017 / -022)

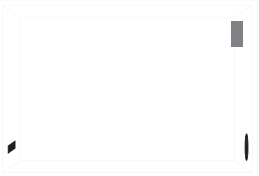
NOTE: Includes all necessary cables.



	INTERIOR (w×h×d)
ENV-017M-27	26" x 22" x 22" (66 x 56 x 56 cm)
ENV-022MD-27	22" x 15" x 14" (56 x 38 x 35.6 cm)



ENV-017



ENV-022

PACKAGE CONTENTS					
A = MED-OFA-17			B = MED-OFA-22		
#	SKU	DESCRIPTION	A	B	
1	ENV-017M-27	Extra Large MDF Cubicle w/Pull Out Shelf	A		
1	ENV-022MD-27	Standard MDF Cubicle w/Pull Out Shelf		B	
1	SG-216A	Mini-Molex Extension, 3-Pin, 18" (45.7 cm)	A	B	
1	SG-216C	Mini-Molex Y Cable, ^M / _{FF} , 3-Pin	A	B	
2	ENV-221CL	House Light, Ceiling Mount	A	B	
1	SG-235PF-6	Power Cord Daisy Chain, 6' (1.83 m)	A	B	
1	SG-235PM-6	Power Cord Daisy Chain, 6' (1.83 m)	A	B	

MED-OFA-017



SOUND ATTENUATING CUBICLE
PACKAGE w/PULLOUT SHELF

MED-OFA-017 **RAT** | **EXTRA LARGE**
MED-OFA-022 **MOUSE** | **STANDARD**

- MDF sound attenuating cubicle with pull-out drawer for easy access to animals
- Two ceiling lights with power cables are included
- Some applications, such as light/dark boxes, may require additional lighting

NOTE: A 28V DC power supply (SG-500T) is required to operate lights and fan; and is recommended to support up to four cubicles.

NOTE: Anchoring of cubicle is recommended


ENV-510S-A

ENV-515S-A


OVERALL (LxWxH)

10.75" x 10.75" x 8"
(27.3 x 27.3 x 20.3 cm)

17" x 17" x 12"
(43.2 x 43.2 x 30.5 cm)

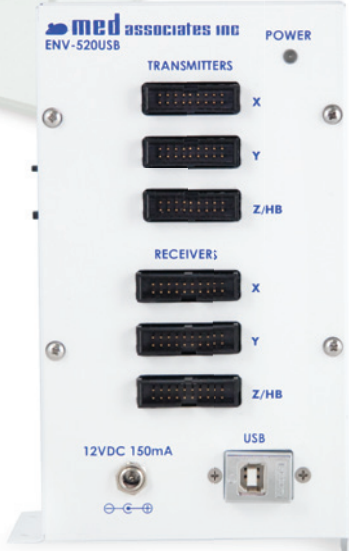


ENV-510S-A



ENV-258

	SPACING	IR BEAMS
ENV-256	0.625" (1.59 cm)	16
ENV-258	1" (2.54 cm)	16



ENV-520USB

INFRARED SOURCE + DETECTOR STRIPS 16 BEAM

ENV-256 MOUSE
ENV-258 RAT

Detects lateral and vertical movement within the open field test chamber.

- Connects to the IR controller for data collection (ENV-520USB)

SPARE RIBBON CABLES

CAB-ENV-256R MOUSE RECEIVER
CAB-ENV-256T MOUSE TRANSMITTER
CAB-ENV-258R RAT RECEIVER
CAB-ENV-258T RAT TRANSMITTER

Connects the IR strips to the IR controller.

ADDITIONAL SEAMLESS OPEN FIELD ARENA

ENV-510S-A MOUSE
ENV-515S-A RAT

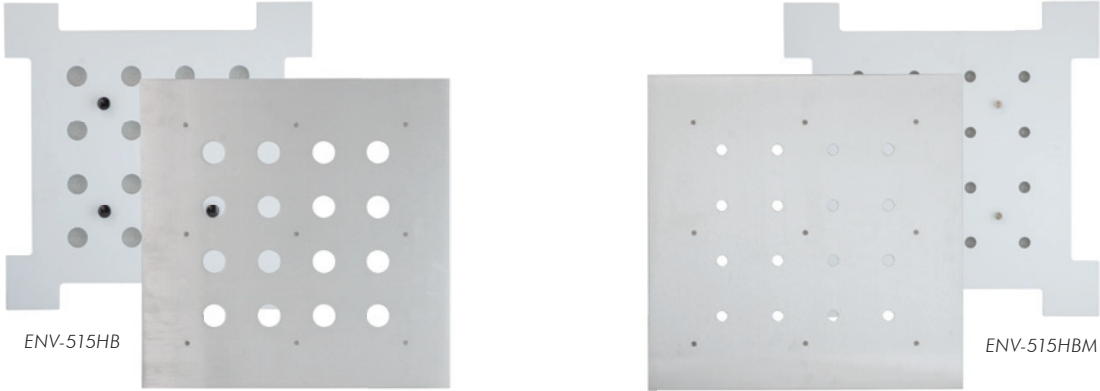
Having spare arenas makes for a quick and easy change between experiments or between animals for cleaning, sanitation, and increased throughput.

IR CONTROLLER 48 CHANNEL

ENV-520USB MOUSE+RAT


Controls up to three pairs of infrared strips (one transmitter + one receiver strip in each pair) with 16 photo beams on each.

	HOLES (ID)	USE WITH
ENV-510HB	0.875" (2.2 cm)	ENV-510S
ENV-515HBM	0.625" (1.6 cm)	ENV-515S
ENV-515HB	1.25" (3.2 cm)	ENV-515S



ENV-515HB

ENV-515HBM



MED-OFAS-RSU
Shown with ENV-515HB

HOLE BOARD FLOOR INSERTS

ENV-510HB MOUSE
ENV-515HBM MOUSE
ENV-515HB RAT

Consists of an aluminum floor with five standoffs, two polypropylene plates, and one stainless steel screen.

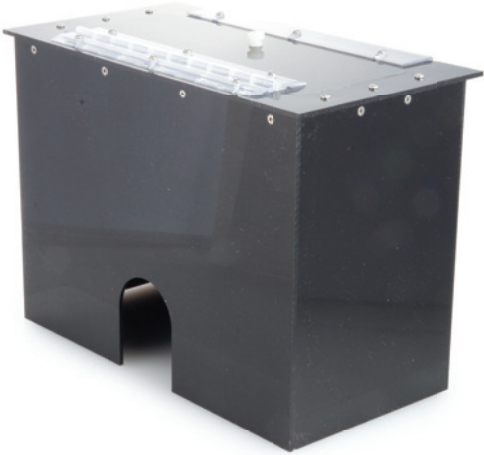
- Sixteen equally spaced holes with bait wells below the floor
 - Screen can be sandwiched between the polypropylene plates under the floor to deny access to bait
- By placing the IR arrays in the lowest available screw holes, the photo-beams are positioned between the floor and the tray to detect entries into the holes

INFRARED SOURCE + DETECTOR STRIPS FOR HOLE BOARD

ENV-256HB MOUSE
ENV-258HB RAT

- Emits IR beams beneath a hole board insert to detect when a test animal has explored a hole
- Connects to the IR Controller (ENV-520USB) in place of the Z-axis strips for data collection

ENV-511



ENV-512



TWO CHAMBER PLACE PREFERENCE INSERT

ENV-512 **MOUSE**
ENV-517 **RAT**

- A wire mesh and grid floor provide distinct tactile environments to maximize contextual differences
- The walls are clear, allowing the user to apply different color and design patterns between the insert and the test arena
 - NOTE: custom contextual additions cannot block the photobeams
- Hinged lid allows easy subject insertion and removal, and a black IRT acrylic wall with manual door separates the two compartments

DARK BOX INSERT

ENV-511 **MOUSE**
ENV-516 **RAT**

- Dark compartment is made of black IRT acrylic as to not interfere with IR beams, allowing tracking in both the light and dark compartments
- Hinged lid for easy animal insertion & removal
- Ideal for using an open field arena for a light/dark test, similar to a shuttle box

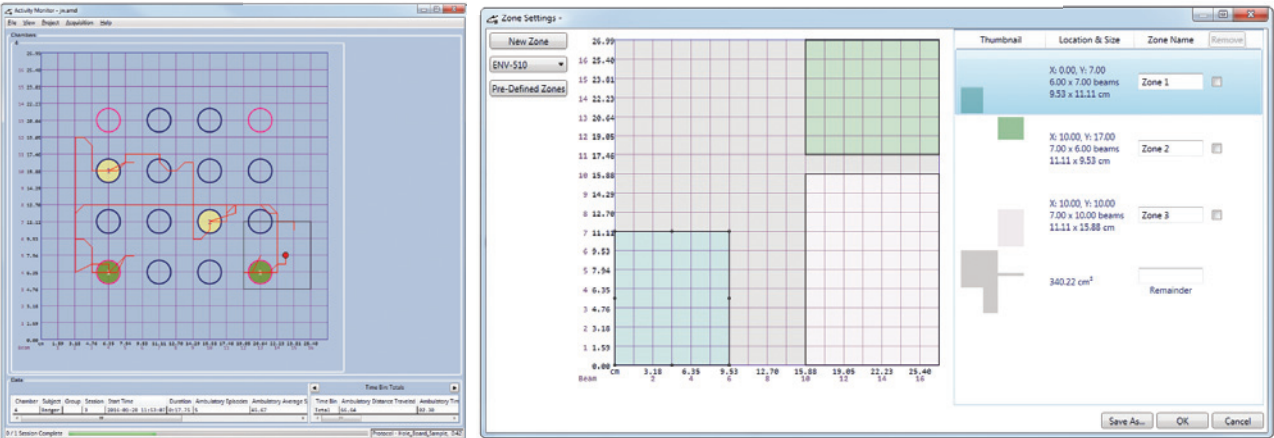
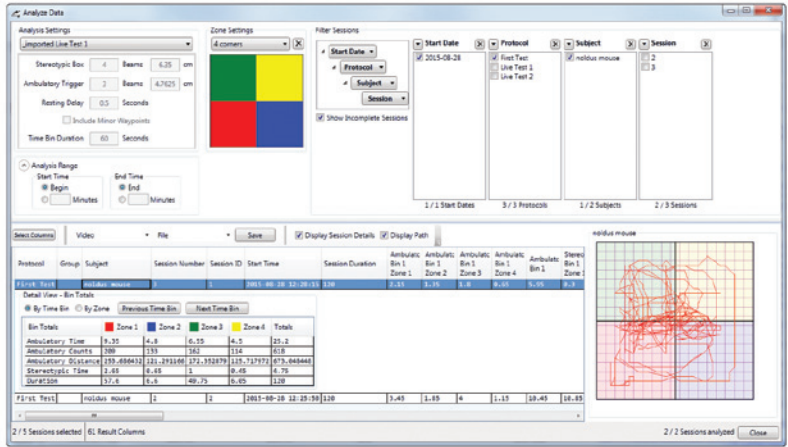
ENV-510T



VENTILATED COVER

ENV-510T **MOUSE**
ENV-515T **RAT**

- Clear vented polycarbonate top for the open field arena prevents the animal from escaping



ACTIVITY MONITOR 7 SOFTWARE

SOF-812 **MOUSE+RAT**

- Written for open field activity test chambers, it allows for flexible protocol configuration and repeated data analysis. Data may be expressed as totals or parsed into user-defined time bins.
- Easy on-screen data analysis, any protocol parameter may be used to sort and filter the data.
 - Data is displayed in real time, along with a cumulative plot of the subjects' activity for all chambers during acquisition
 - Live, easy to use data analysis with settings, filters and time ranges that can be adjusted on the fly — from one screen
 - Easily export data to text, Excel®, video, or legacy data file formats
 - Customize zones to create definable, drag-and-drop adjustable zones, or select from a list of common configurations

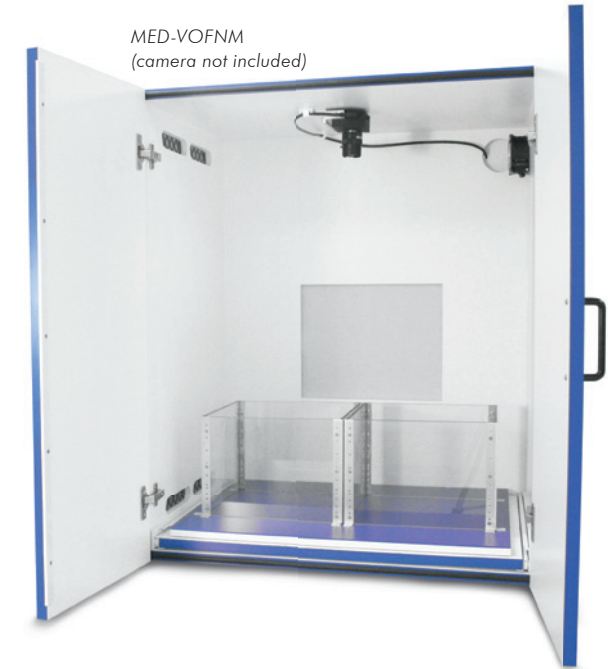
- Standard measures include:
 - Ambulatory counts, distance, time and episodes
 - Stereotypic counts and time
 - Resting time
 - Jump counts and time
 - Rearing time
 - Average speed
 - Hole board scoring*
 - User defined zone analysis*
 - Standard run time data

*when appropriate

COMPUTER REQUIREMENTS

- Windows 7, 8, 10 or 11 (32 and 64-bit)
- One USB 2.0 Port (for ENV-520USB)

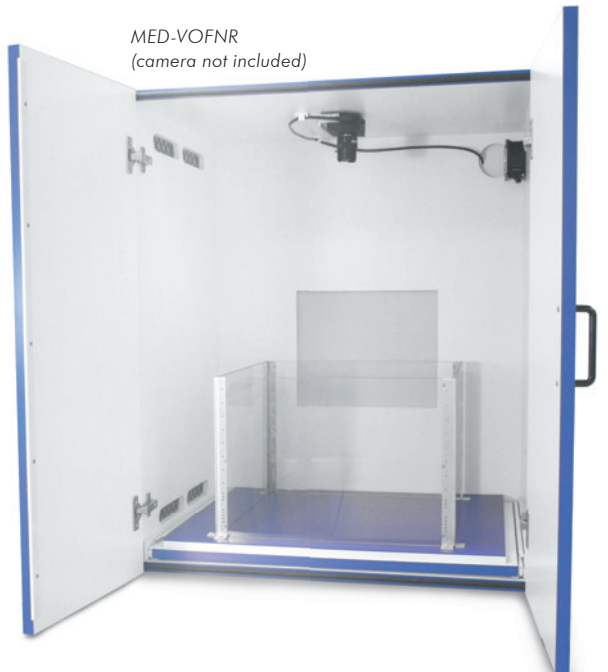
FOR USE WITH THIRD PARTY
VIDEO TRACKING SOFTWARE



MED-VOFNM
(camera not included)



MED-VHCNM
(camera not included)



MED-VOFNR
(camera not included)



MED-VHCNR
(camera not included)

INTERIOR (LxWxH)

PHM-125H

10.7" x 8.1" x 6.2"
(27.2 x 20.5 x 15.7 cm)

PHM-126H

19" x 10.5" x 8"
(48.2 x 26.6 x 20.3 cm)

SAC-283422-NIR

28" x 34" x 22"
(71.1 x 86.4 x 55.9 cm)

PACKAGE CONTENTS

A = MED-VHCNM
B = MED-VHCNR

C = MED-VOFNM
D = MED-VOFNR

#	SKU	DESCRIPTION	A	B	C	D
4	PHM-125H	Specialized Home Cage for Mouse	A			
2	PHM-126H	Specialized Home Cage for Rat		B		
1	MSUB-VOF-RAT	Video Open Field (ENV-515)				D
1	MSUB-VOF-MOUSE	Video Open Field (ENV-510)			C	
1	NIR-100V	Variable Intensity NIR/White Light Package	A	B	C	D
1	SAC-283422-NIR	MDF SAC for Video Tracking	A	B	C	D

VIDEO HOME CAGE PACKAGE
w/NIR LIGHTING

MED-VHCNM **MOUSE**
MED-VHCNR **RAT**

- Mouse (4 cages), Rat (2 cages)
- Extra tall sound attenuation cubicle accommodates a ceiling mounted video camera (camera not included)
- NIR lighting for video recording in the dark
- Pull-out blue base enables tracking of rodents of many colors
- SAC features a 28V DC fan and camera mount
- Ad-lib food + water receptacles are located on the side for an unobstructed view for top-mounted video monitoring equipment
- Clear polycarbonate lid securely attaches to the home cage with four key hole slots

Note: There is an opening in the back panel of cubicle for the NIR-100 Light System (sold separately). Power supply to operate fan also sold separately.

VIDEO OPEN FIELD PACKAGE
w/NIR LIGHTING

MED-VOFNM **MOUSE**
MED-VOFNR **RAT**

- Mouse (2 arenas), Rat (1 arena)
- Extra tall sound attenuation cubicle accommodates a ceiling mounted video camera (camera not included)
- NIR lighting for video recording in the dark
- Pull-out blue base enables tracking of rodents of many colors
- SAC features a 28V DC fan and camera mount

Note: There is an opening in the back panel of cubicle for the NIR-100 Light System (sold separately). Power supply to operate fan also sold separately.



p: 802.527.9724 | f: 802.524.2110 | www.med-associates.com | e: sales@med-associates.com