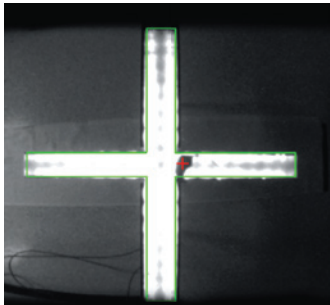
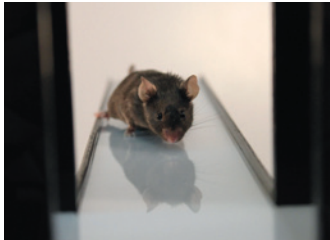
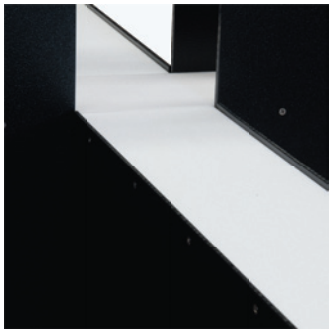


## SPECIALIZED MAZES

Elevated Plus Maze . . . . .	2-5
Zero Maze . . . . .	6-7
Barnes Maze . . . . .	8-11
Water Maze . . . . .	12-15





MED-ELVM-1M

	OVERALL (L×W×H)	HEIGHT (W/CAMERA MOUNT)	ARMS (L×W)	CENTER (L×W)	WALLS (L×W)
ENV-560	42" x 42" x 42.25" (106.68 x 106.68 x 119.94 cm)	N/A	20" x 4" (50.8 x 10.16 cm)	4" x 4" (10.16 x 10.16 cm)	15.94" (40.49 cm)
ENV-560A	29" x 29" x 36.9" (73.66 x 73.66 x 93.73 cm)	55.92" (142.04 cm)	13.75" x 2.39" (34.9 x 6.07 cm)	2.4" x 2.4" (6.1 x 6.1 cm)	7.53" (19.13 cm)

PACKAGE CONTENTS					
A = MED-ELVM-1M			B = MED-ELVM-1R		
#	SKU	DESCRIPTION	A	B	
1	DIG-713A	SuperPort TTL Module, 16 Input	A	B	
8	ENV-253SD	Individual IR Source + Detector	A		
1	ENV-256I-8	IR Controller to 5V Inputs, 8 Channel	A	B	
1	ENV-560A-8	IR Photobeam Elevated Plus Maze for Mouse	A		
1	ENV-560-IR	IR Photobeam Elevated Plus Maze for Rat		B	
1	SG-210TTL-20	DB-25 Cable, 20' (6.1 m)	A	B	
1	SG-210TTL-5	DB-25 Cable, 5' (1.52 m)	A	B	
1	SG-256J	Junction Box	A	B	

ELEVATED PLUS MAZE PACKAGE  
IR PHOTOBEAM

MED-ELVM-1M **MOUSE**  
MED-ELVM-1R **RAT**

With the addition of IR sensors, this maze package is for use with Med-PC software.

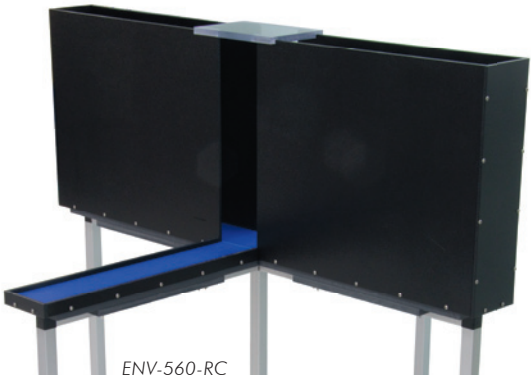
- Dual IR photobeam sensors at the entrance to each runway distinguishes between exploration & entrances for accurate position detection
- Multiple mazes can share some interface components, contact our sales team for cost saving options

ELEVATED PLUS MAZE STANDARD

ENV-560 **RAT**  
ENV-560A **MOUSE**

Without IR sensors, this maze is for use for manual scoring or with third party video tracking software.

- Sturdy base with plastic runways
- Interface and software packages sold separately
- Easily disassembled for storage
- Standard maze has black walls with white plastic runways (other colors available upon request)
- Sturdy support stand is held together with quick connect pins for easy disassembly
- IR control box is detachable for simpler cable management
- Runways easily snap on and off for cleaning



ENV-560-RC

BLUE FLOOR INSERTS

ENV-560-RC **RAT**  
ENV-560A-RC **MOUSE**

- Use this blue PVC for high contrast color for improved video tracking performance using light colored animals
- Thin material will not interfere with IR photobeams

PACKAGE CONTENTS					
A = MED-NIRPMNM			B = MED-NIRPMNR		
#	SKU	DESCRIPTION	A	B	
1	ENV-564	NIR Backlit Elevated Plus Maze for Rat		B	
1	ENV-564A	NIR Backlit Elevated Plus Maze for Mouse	A		
1	NIR-110	Control Box for Mouse	A	B	
1	SG-564-15	Light Cable	A	B	

	OVERALL (L×W×H)	HEIGHT W/CAMERA MOUNT	ARMS (L×W)	CENTER (L×W)	WALLS (L×W)
ENV-564	42" x 42" x 42.25" (106.68 x 106.68 x 119.94 cm)	N/A	20" x 4" (50.8 x 10.16 cm)	4" x 4" (10.16 x 10.16 m)	15.94" (40.49 cm)
ENV-564A	29" x 29" x 36.9" (73.66 x 73.66 x 93.73 cm)	55.92" (142.04 cm)	13.75" x 2.4" (34.9 x 6.1 cm)	2.4" x 2.4" (6.1 x 6.1 cm)	7.53" (19.13 cm)



ELEVATED PLUS MAZE PACKAGE  
NIR BACKLIT

MED-NIRPMNM **MOUSE**  
MED-NIRPMNR **RAT**

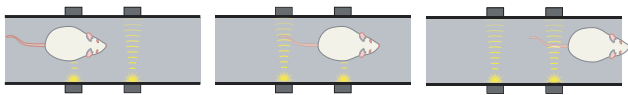
- Includes a maze and an NIR control box
  - Control the lights manually when connected to a wall outlet, or remotely via a 28 V Med output

ELEVATED PLUS MAZE NIR BACKLIT

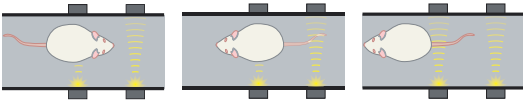
ENV-564 **RAT**  
ENV-564A **MOUSE**

Without IR sensors, this maze is for use for manual scoring or with third party video tracking software.

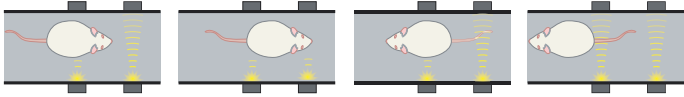
- NIR lighting is invisible to the animal, which eliminates distractions caused by bright overhead visible lighting such as shadows, glare, and reflections
- Evenly illuminated translucent polypropylene floor silhouettes the animal creating an easy to track, high contrast video image
- Track animals of various coat colors without worrying about ambient light or maze color
  - NOTE: Requires monochrome video camera with an NIR filter



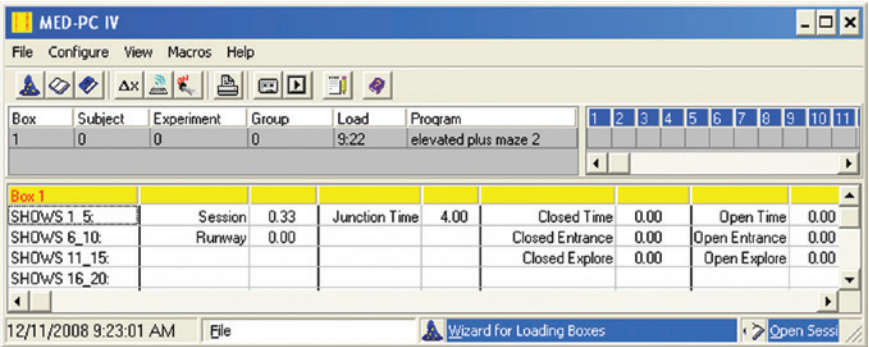
Entrance



Exploration (one beam broken)



Exploration (two beams broken)

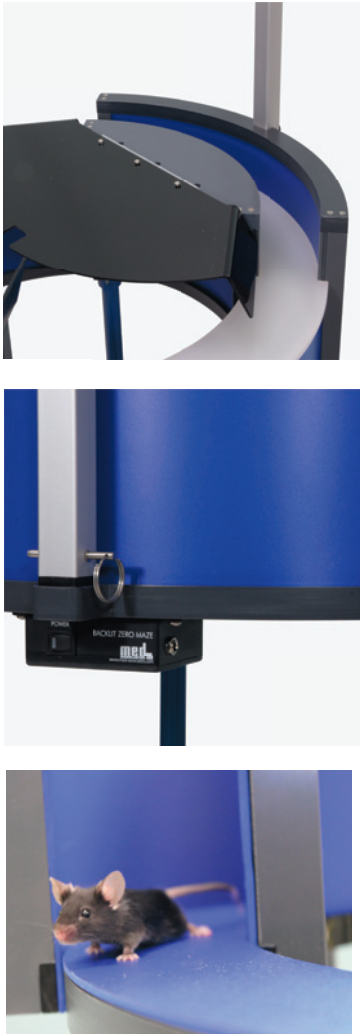


SOF-700RA-3 shown in Med-PC IV

ELEVATED PLUS MAZE DATA COLLECTION PROTOCOL

SOF-700RA-3 **MOUSE+RAT**

- Contains two Medstate Notation™ procedures:
  - One defines the runway time as the moment the subject starts exploring the runway
  - The other requires the subject to clear both photobeams in the runway before the runway time is counted
- Set the session time and start delay
  - Default session time = 15 minutes
  - Default start delay = 5 seconds
- Data collection includes:
  - Amount of entrances into open and closed runways
  - Amount of explorations into open and closed runways
  - Time spent in the open and closed runways
  - Number of full entrances into each of the four runways



	OVERALL (HxOD)	HEIGHT w/CAMERA MOUNT	WALL HEIGHT (H)	FALL HEIGHT (ODxL)
ENV-561	34" x 24" (86.4 x 61 cm)	N/A	3.2" (8.1 cm)	30.5" (77.5 cm)
ENV-561A	34" x 24" (86.4 x 61 cm)	88" (223.5 cm)	3.2" (8.1 cm)	30.5" (77.5 cm)



ZERO MAZE STANDARD

ENV-561 **RAT**  
ENV-561A **MOUSE**

- Without IR sensors, this maze is for use for manual scoring or with third party video tracking software.
- Wall height of runways optimized for video recording applications
  - Lightweight & easy to clean plastic material
  - Textured matte finish plastic reduces glare

ZERO MAZE NIR BACKLIT

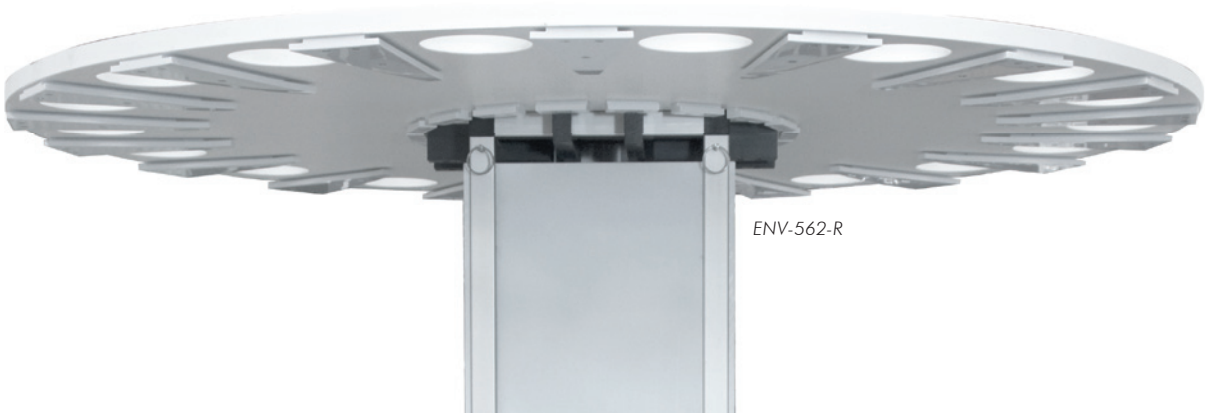
ENV-561-BL **RAT**  
ENV-561A-BL **MOUSE**

- NIR lighting is invisible to the animal, which eliminates distractions caused by bright overhead visible lighting such as shadows, glare, and reflections
- Evenly illuminated maze floor silhouettes the animal creating an easy to track, high contrast video image
- Track animals of various coat colors without worrying about ambient light or maze color
  - NOTE: Requires monochrome video camera equipped with an NIR filter, sold separately
- Closed runways feature hinged covers to prevent the animal climbing out of the maze





ENV-562-R



ENV-562-R

PACKAGE CONTENTS							
A = ENV-562-M B = ENV-562-M-S				C = ENV-562-R D = ENV-562-R-S			
#	SKU	DESCRIPTION	A	B	C	D	
1	ENV-562-M-GB	Safe Box for Mouse	A	B			
1	ENV-562-M-TOP	Barnes Maze Platform for Mouse	A	B			
1	ENV-562-R-GB	Safe Box for Rat			C	D	
1	ENV-562-R-TOP	Barnes Maze Platform for Rat			C	D	
1	MSUB-ENV-562	Barnes Maze Stand, 55" H (139.7 cm)	A		C		
1	MSUB-ENV-562-S	Barnes Maze Stand, 35" H (88.9 cm)		B		D	

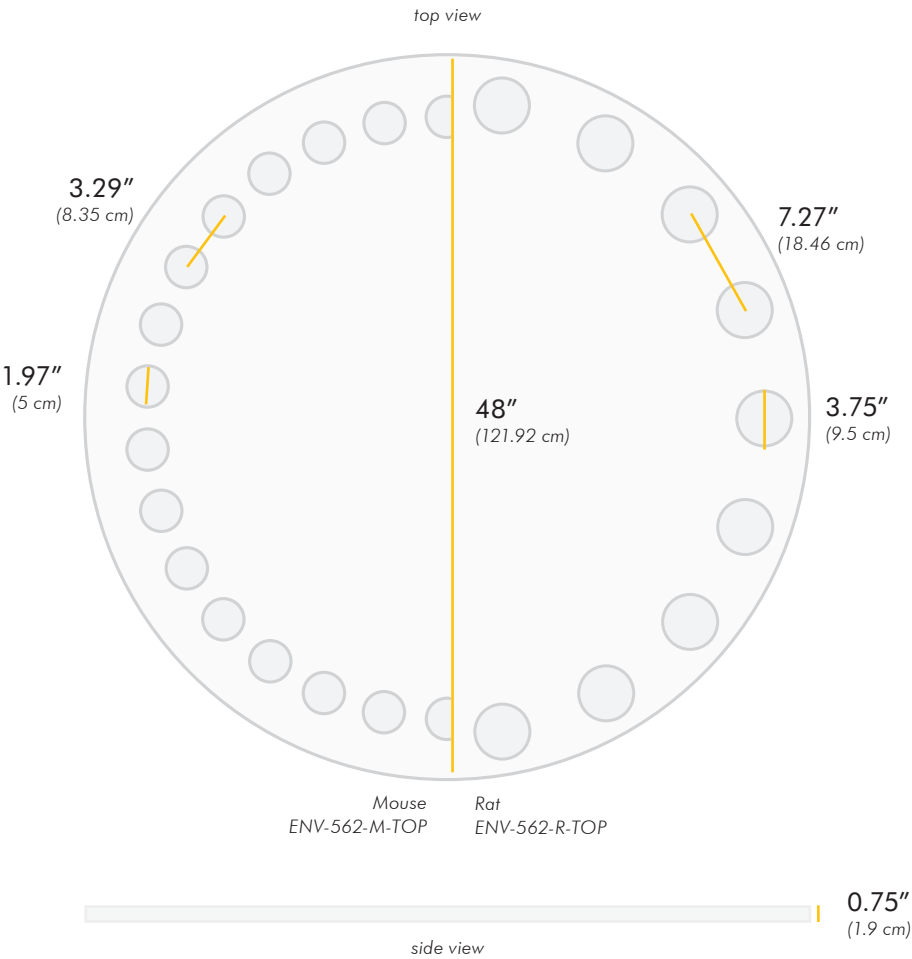
BARNES MAZE PACKAGE STANDARD

ENV-562-M    **MOUSE** | 55 in.  
ENV-562-M-S    **MOUSE** | 35 in.

ENV-562-R    **RAT** | 55 in.  
ENV-562-R-S    **RAT** | 35 in.

- Without IR sensors, this maze is for use for manual scoring or with third party video tracking software.
- Modular design allows the same base to be used for rats and mice, simply switch maze platforms
  - Safe box features:
    - Cage washable black polypropylene
    - Removable steps to facilitate entry and decrease hesitation by the test animal to escape from the aversive environment (the maze top)
  - Removable, and can be placed below any hole

- Maze surface features:
  - Constructed from bright white or blue expanded PVC to ensure proper light distribution and reduce glare
  - Material is also easy to clean
  - Standard colors are white or blue, but custom colors are available
  - Custom sizes available



BARNES MAZE TOP

ENV-562-M-TOP **MOUSE**  
ENV-562-R-TOP **RAT**

- Holes evenly spaced (see illustration)
- Drawer-style tracks under each hole for easy installation of a safe box
- Platform surface made of bright white expanded PVC for proper light distribution and reduced glare
- Durable & easy to clean material

	WORKING AREA (L×W×H)	STEP (H)
ENV-562-M-GB	5.27" x 2.11" x 1.26" (13.39 x 5.36 x 3.2 cm)	0.692" (1.76 cm)
ENV-562-R-GB	15.25" x 4.75" x 5.6" (38.7 x 12.1 x 14.2 cm)	1.75" (4.45 cm)



BARNES MAZE SAFE BOX

ENV-562-M-GB **MOUSE**  
ENV-562-R-GB **RAT**

- Black polypropylene box provides an escape from the aversive white maze-top environment
- Easily installed under the maze in drawer-style tracks below any hole of the maze
- Removable step for easier transition between maze surface and safe box decreases hesitation by the test animal
- Cage washable



BARNES MAZE STAND

MSUB-ENV-562 **MOUSE+RAT** | 55 in.  
MSUB-ENV-562-S **MOUSE+RAT** | 55 in.

- Compatible with both mouse and rat maze tops
- Either 35" (88.9 cm) or 55" (139.7 cm) heights



ENV-596M  
shown in mouse pool

PACKAGE CONTENTS							
A = MED-WMNM B = MED-WMNM-H				C = MED-WMNR D = MED-WMNR-H			
#	SKU	DESCRIPTION	A	B	C	D	
1	ENV-594M	Water Maze Pool for Mouse (white)	A	B			
1	ENV-594M-FI	Floor Insert for Mouse	A	B			
1	ENV-594R	Water Maze Pool for Rat (white)			C		
1	ENV-594R-FI	Floor Insert for Rat			C	D	
1	ENV-594R-H	Water Maze Pool for use w/Heater for Rat (white)				D	
1	ENV-597	Pool Heater		B		D	

WATER MAZE PACKAGE STANDARD

MED-WMNM **MOUSE**

MED-WMNM-H **MOUSE** **HEATED**

MED-WMNR **RAT**

MED-WMNR-H **RAT** **HEATED**

- “False bottom” insert for stowing away the heater, and provides a smooth surface for placement of platforms or other accessories anywhere on the maze floor
- Constructed of chemical resistant polyethylene material
- White is the default color, black or blue are also available
- We recommend emptying the pool using a submersible pump (ENV-599), but a drain can be installed by request
- Three basic strategies to escape the maze:
  - Praxic = remembering the movements needed to get to the platform
  - Taxic = uses visual cues to reach their destination
  - Spatial = using distal cues as points of reference to locate themselves

ENV-594M



	OVERALL (ODxH)	CAPACITY
ENV-594M	54" x 30" (137.16 x 76.2 cm)	200 gallons
ENV-594R	80" x 30" (203.2 x 76.2 cm)	500 gallons



ENV-593M-C

	OVERALL (LxWxH)
ENV-593M-C	47.3" x 47.3" x 6.55" (120.14 x 120.14 x 16.64 cm)
ENV-593R-C	64.83" x 64.83" x 16.38" (164.67 x 164.67 x 41.61 cm)

POOL SUPPORT STAND  
w/CASTERS

ENV-593M-C **MOUSE**  
ENV-593R-C **RAT**

- Rugged pool support is powder coated to prevent corrosion
- Support stand has industrial swivel casters with built-in leveling pads to easily adjust and move the pool

WATER MAZE POOL

ENV-594M **MOUSE**  
ENV-594R **RAT**

- Polyethylene plastic is easy to clean
- White pool is supplied by default, also available in blue or black
  - Blue pools are ideal for high contrast video without using dye
- Depth of pool optimal for use with our platforms
- A hard cover is also available (sold separately)

SUBMERSIBLE POOL HEATER

ENV-597 **MOUSE+RAT**

- Controlled by an external thermostat to maintain consistent temperature

NOTE: Model may vary due to supplier availability



	PLATFORM (øD)	MIN/MAX HEIGHT	RISE TIME (ADJUSTABLE)	BASE (L×W×H)
ENV-595M	4.25" (11 cm)	8.5" / 14.5" (21.59 / 36.83 cm)	1-2 sec	6" x 6" x 1.13" (15.24 x 15.24 x 2.87 cm)
ENV-595R	6.25" (16 cm)	8.5" / 14.5" (21.59 / 36.83 cm)	1-2 sec	8" x 8" x 1.13" (20.32 x 20.32 x 2.87 cm)
ENV-596M	4" (10.2 cm)	9" / 14.25" (22.86 / 36.2 cm)	N/A	7" x 7" x 0.5" (17.78 x 17.78 x 1.27 cm)
ENV-596R	6" (15.2 cm)	9" / 14.25" (22.86 / 36.2 cm)	N/A	7" x 7" x 0.5" (17.78 x 17.78 x 1.27 cm)



### ADJUSTABLE WATER MAZE PLATFORM

ENV-596M **MOUSE**  
ENV-596R **RAT**

- Provides a textured surface on which the animal can escape the water
- Weighted base ensures that the platform will not drift from position after placement
- Telescoping design for adjusting the platform height as needed

### ON-DEMAND “ATLANTIS” WATER MAZE PLATFORM

ENV-595M **MOUSE**  
ENV-595R **RAT**

- Provides a textured surface on which the animal can escape the water
- Weighted base ensures that the platform will not shift position after placement in the pool
- Minimizes confounds due to extinction & non-spatial learning in probe trials (e.g. animal swimming a specified distance from the wall)
- Platform is held submerged well below the water’s surface using electromagnets which can be deactivated, thus raising the platform
  - Triggered manually or programmed with third party experiment control software or our Water Maze Tracking Software (SOF-845)
  - To operate with third party software, use the TTL platform controller (SG-596MR-TTL, sold separately)
- Can be programmed to be raised:
  - At a defined time within the trial
  - When the animal remains in a region for a user-defined duration
- Operation is smooth and quiet to minimize audible or tactile cues when the platform becomes available



### WATER MAZE TRACKING SOFTWARE

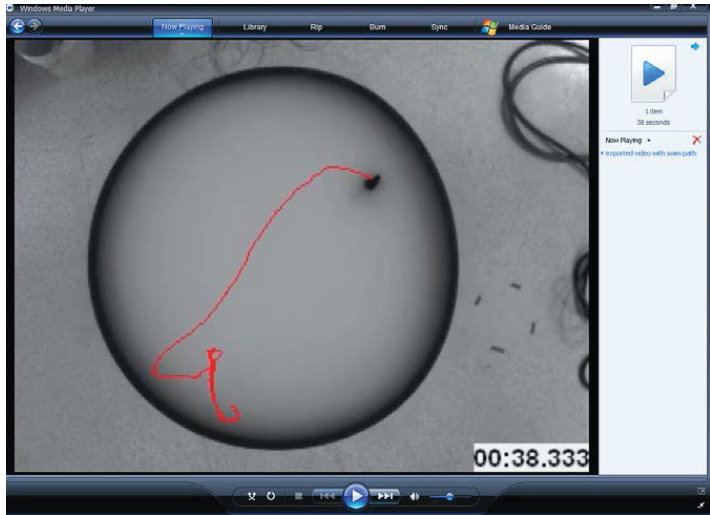
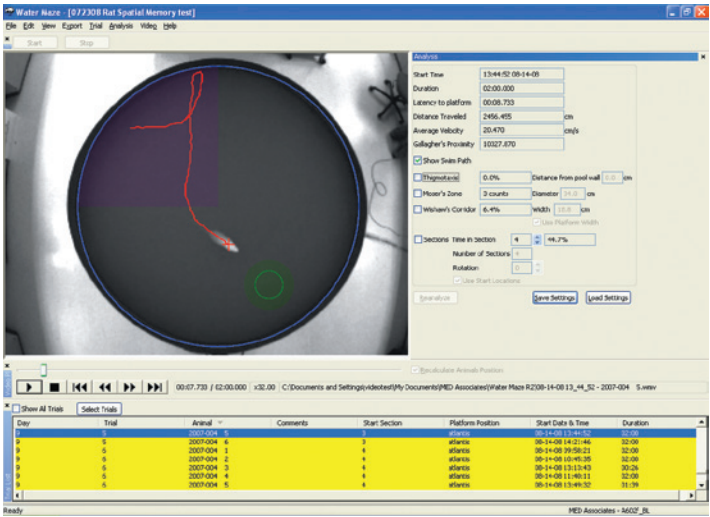
SOF-845 **MOUSE+RAT**

- Full control of study design, organize study by:
  - Day of session
  - Animal ID
  - Platform location
  - Start position
  - Maximum total duration
- Define pool parameters using a simple graphical interface:
  - Size
  - Platform location
  - Start location

- Track & analyze animals swimming in real time:
  - Latency to platform
  - Average velocity
  - Other swim path information
- Control an on-demand “Atlantis” platform

#### COMPUTER REQUIREMENTS

Windows 7, 8, or 10 (32 and 64-bit)







p: 802.527.9724 | f: 802.524.2110 | [www.med-associates.com](http://www.med-associates.com) | e: [sales@med-associates.com](mailto:sales@med-associates.com)