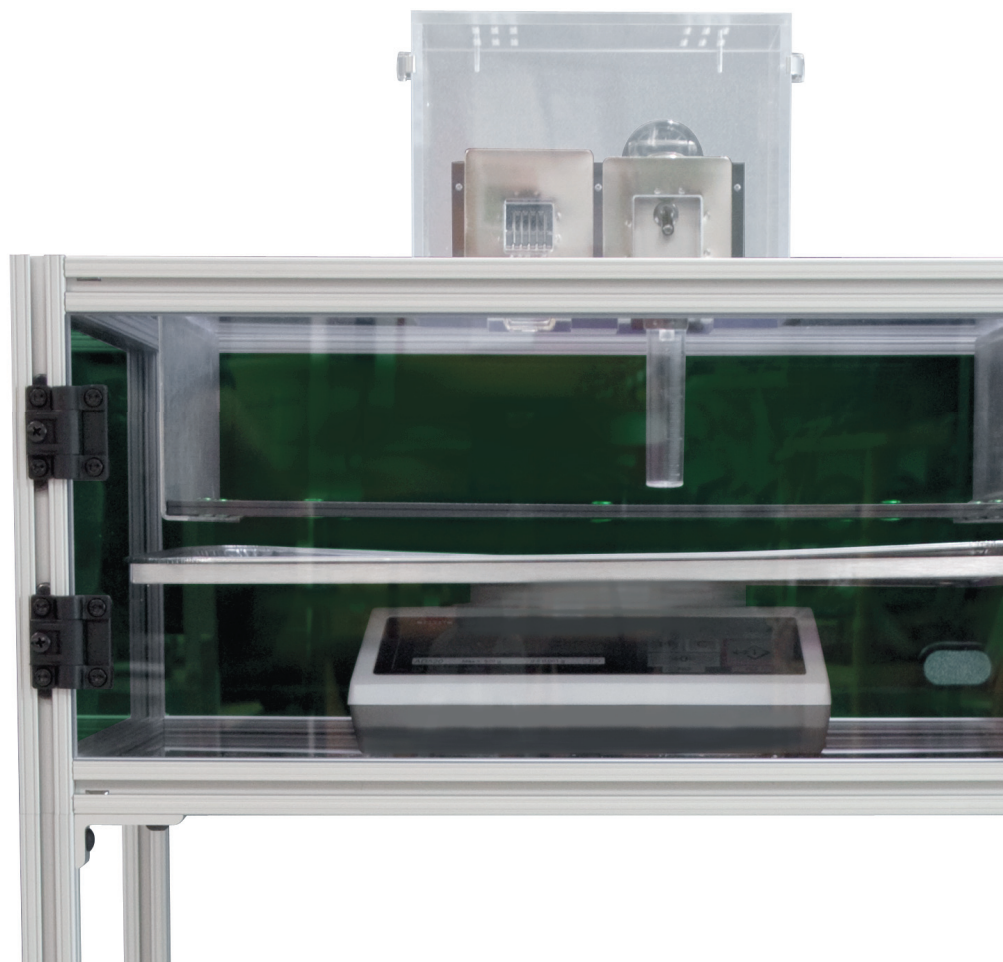


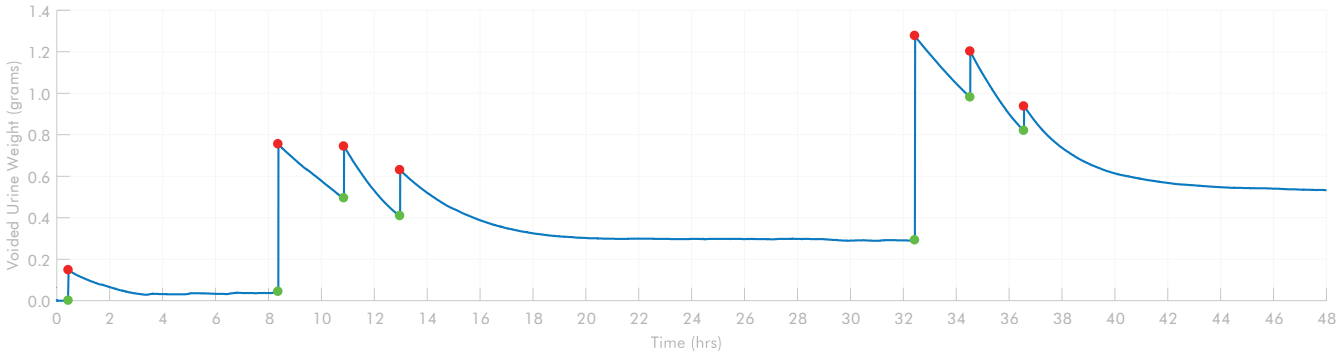
UROVOID™

Systems Overview	2-3
Modular UroVoid Packages for Mouse	4-7
Modular Components for Mouse	8-11
UroVoid Packages for Rat	12-13
Components for Rat	14-15
Interface Packages	16-17
Software	18-19





MET-UROS-R with MET-URO-INT



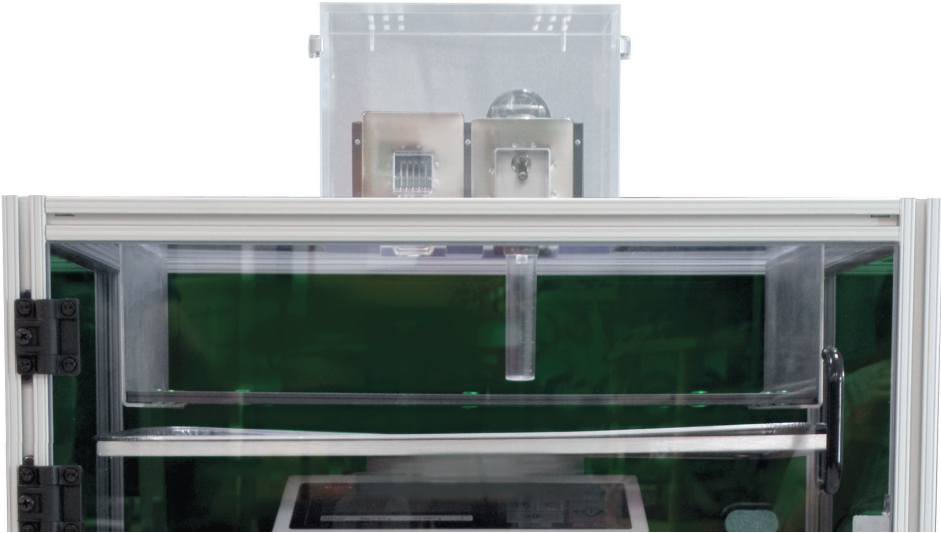
UROS-M-MOD (without stand) with MET-URO-INT



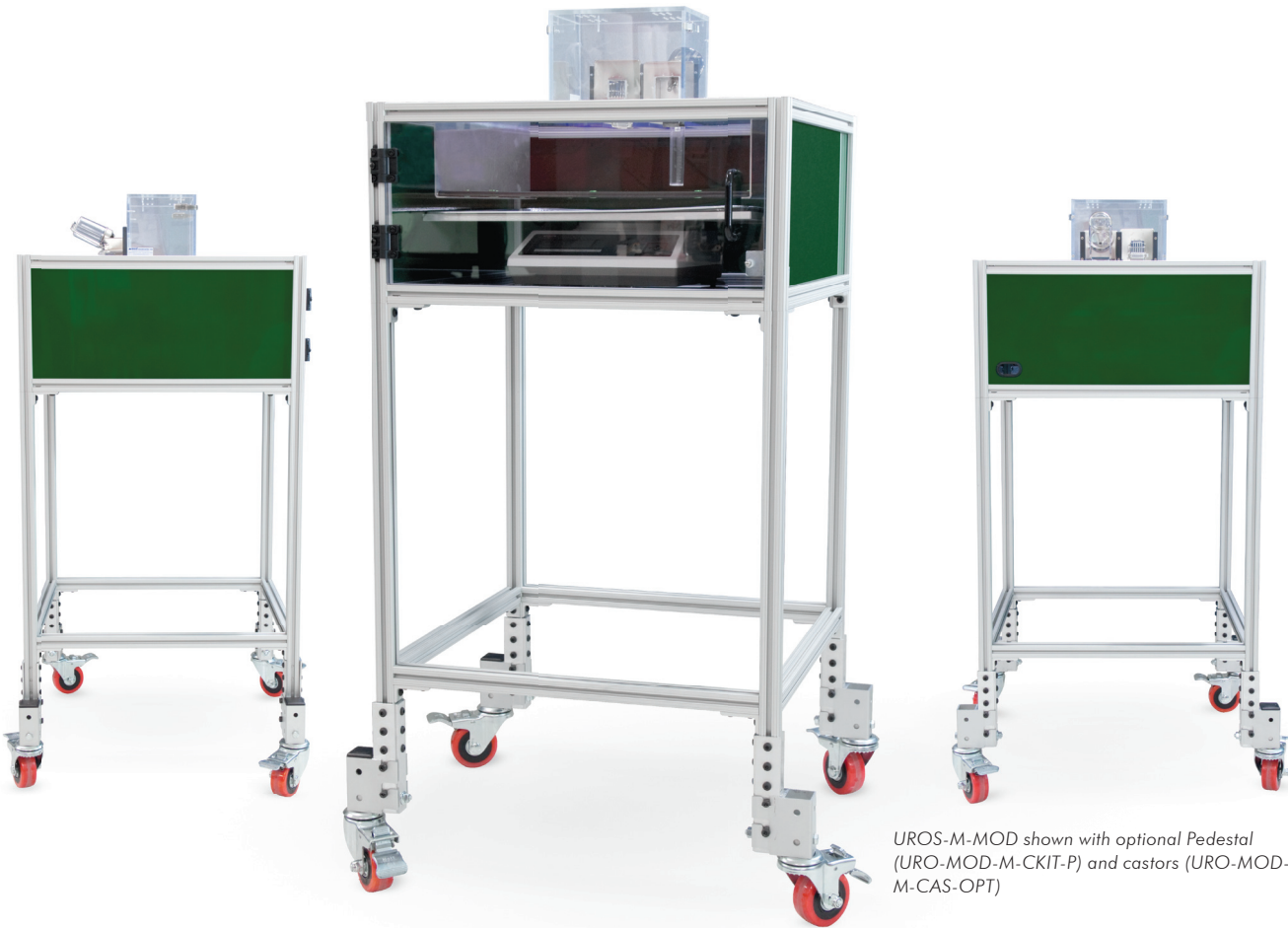
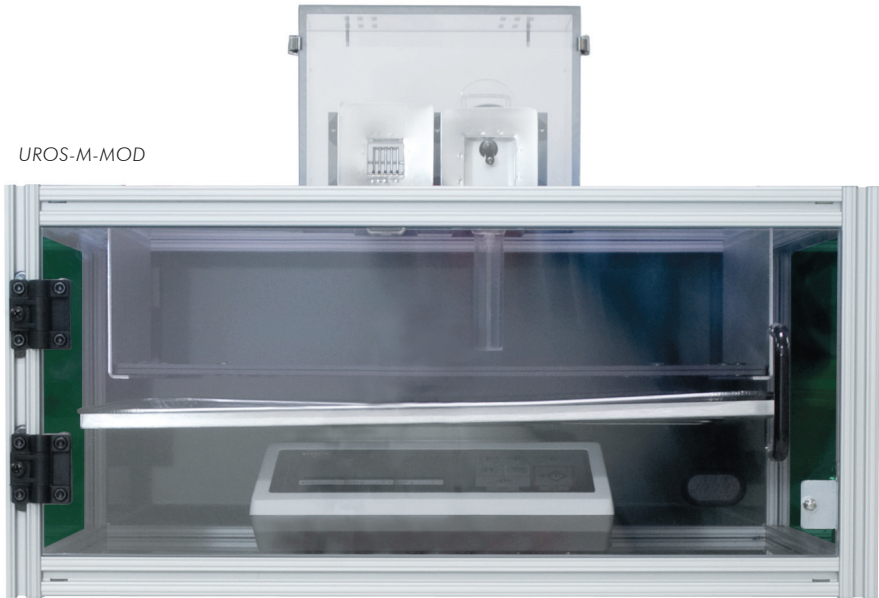
UROVOID™ URINARY VOIDING FREQUENCY QUANTIFICATION

Non-invasive measurement of bladder function in conscious rats and mice

- Monitor up to twelve (12) cages simultaneously
- Collect data for up to forty (40) days
- A complete UroVoid system consists of the following:
 - Interface package/software (see pages 16-17)
 - Up to twelve (12) cage packages (see pages 4-11 for mouse, and pages 12-15 for rat)
- Basic UroVoid design requirements:
 - Cage designed for the mouse to live in for 24-48 hours or longer
 - Access to food and water
 - Prevent food and water from contaminating measurements
 - Separate feces from urine
 - Collect and measure voided urine, each void time and volume need to be captured



UROS-M-MOD



UROS-M-MOD shown with optional Pedestal (URO-MOD-M-CKIT-P) and castors (URO-MOD-M-CAS-OPT)

PACKAGE CONTENTS			
A = UROS-M-MOD			
#	SKU	DESCRIPTION	A
1	URO-M-CAGE-001	Urovoid Cage	A
1	URO-MODENC	Modular Isolation Enclosure	A
1	URO-M-FILTER	Separation Filter & Frame	A
1	URO-M-FOOD	Food Hopper	A
1	URO-M-WATER	Water Bottle	A
1	URO-M-PAN	Urine Collection Pan Pk/5	A
1	SCALE-TOR-AD-520-USB-URO	Precision Balance w/USB Kit	A
1	URO-PSP-TOR-AD-520	Urine Collection Pan Scale Support	A

PACKAGE CONTENTS									
A = UROP-M-MOD-2			C = UROP-M-MOD-6			E = UROP-M-MOD-12			
B = UROP-M-MOD-4			D = UROP-M-MOD-8						
#	SKU		DESCRIPTION		A	B	C	D	E
2 4 6 8 12	UROS-M-MOD		Modular Urovoid Package		A	B	C	D	E
0 3 6 9 12	URO-MOD-M-CKIT-H		Horizontal Complexing Kit			B	C	D	E
4 6 8 10 10	URO-MOD-M-CKIT-M		Pedestal Mobility Kit		A	B	C	D	E
1 2 3 4 4	URO-MOD-M-CKIT-P		Pedestal Complexing Kit		A	B	C	D	E
1 2 3 4 8	URO-MOD-M-CKIT-V		Vertical Complexing Kit		A	B	C	D	E

MODULAR UROVOID™ VOIDING FREQUENCY PACKAGES

UROS-M-MOD **MOUSE** **SINGLE UNIT**
UROP-M-MOD-2 **MOUSE** **TWO UNIT**
UROP-M-MOD-4 **MOUSE** **FOUR UNIT**

UROP-M-MOD-6 **MOUSE** **SIX UNIT**
UROP-M-MOD-8 **MOUSE** **EIGHT UNIT**
UROP-M-MOD-12 **MOUSE** **TWELVE UNIT**

- Each station is equipped with a precision analytical balance for accurate void mass quantification and USB connectivity for easy & reliable data acquisition
 - Ad-lib access to food and water
 - Food hopper and water bottle designed to contain spilled matter and minimize caching behavior
- Isolation enclosure protects the scale from ambient noise and air currents
 - The cage is designed for the mouse to live in for prolonged periods of time (24-48 hours or longer)
 - Optional modified cage top for accommodating optogenetics, IV self-administration, or cystometry equipment



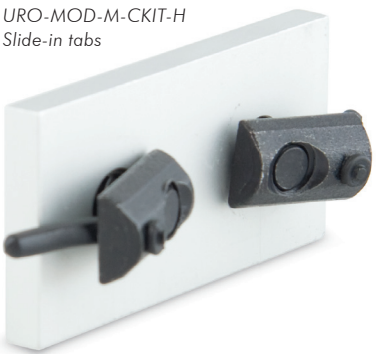
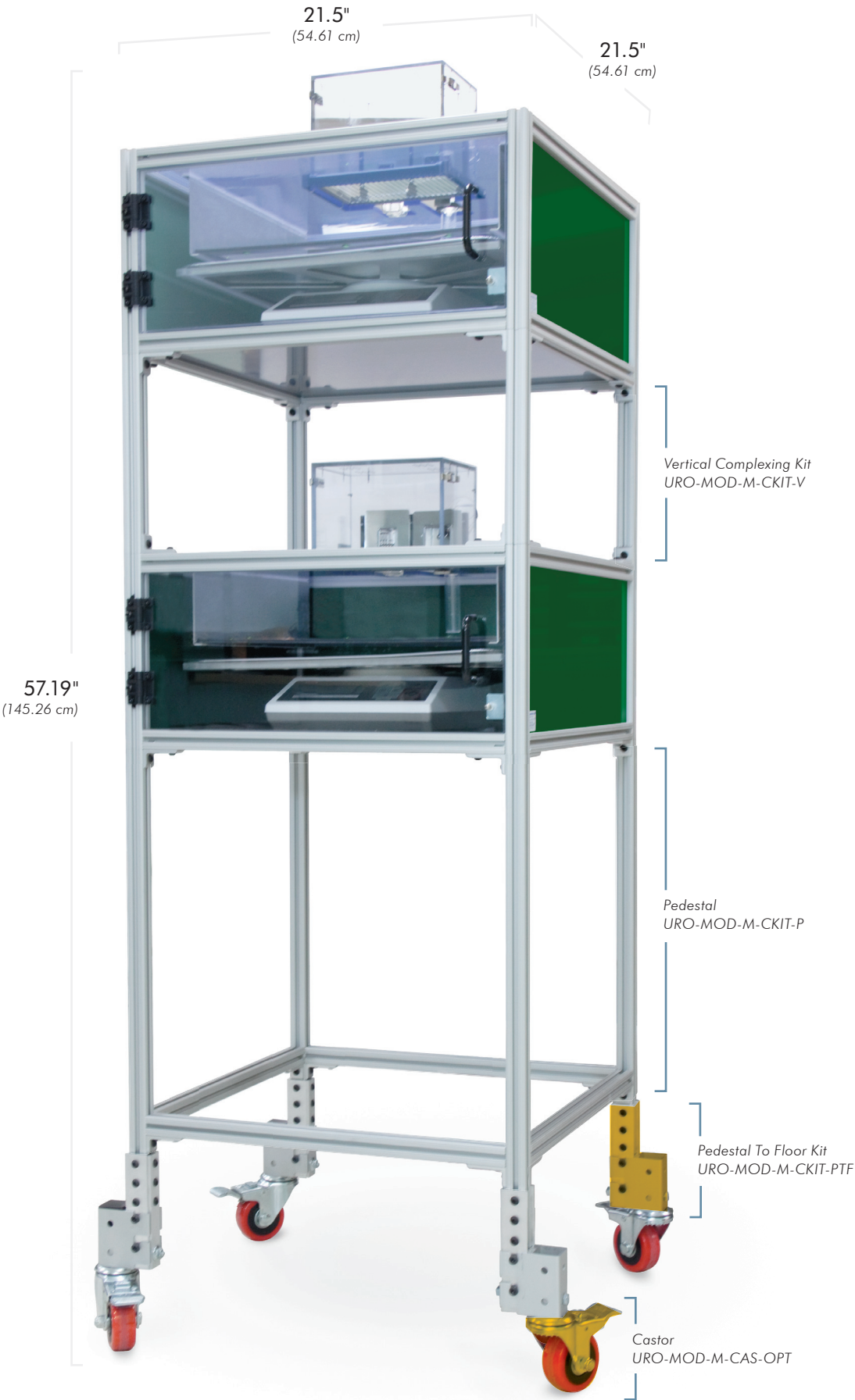
UROP-M-MOD-2



Alternative configurations (such as this side-by-side) can be assembled, contact Sales for more info.



UROP-M-MOD-4



Standard

PEDESTAL MOBILITY KIT

URO-MOD-M-CKIT-M **MOUSE**

Consists of the Pedestal To Floor Kit (URO-MOD-M-CKIT-PTF) and Castors (URO-MOD-M-CAS-OPT).

- Pedestal To Floor Kit
 - Steel brackets for connecting the pedestal to the castor wheel
- Castors
 - Double brake locks both wheel and swivel rotation
 - Polyurethane tires will not form a "flat spot" or marks on the floor



Standard

VERTICAL COMPLEXING KIT

URO-MOD-M-CKIT-V **MOUSE**

Steel brackets and slide-in tabs to stack a unit one on top of another.

HORIZONTAL COMPLEXING KIT

URO-MOD-M-CKIT-H **MOUSE**

Steel brackets and slide-in tabs to connect units side-by-side.

PEDESTAL

URO-MOD-M-CKIT-P **MOUSE**

Four steel legs that connect to the modular enclosure via brackets.

Optional

LEVELING FEET

URO-MOD-M-LVFT-OPT **MOUSE**

- Use in place of Castors (URO-MOD-M-CAS-OPT)
- Zinc-plated steel is corrosion resistant
- Ball-and-socket design swivels to compensate for uneven floors up to 7.5 degrees in any direction
- Non-skid cushion for stability



Standard

WASTE SEPARATION FILTER
+ FRAME

URO-M-FILTER MOUSE

Our research-driven design uses finely spaced stainless steel wire for optimal urine/solid waste separation.

- Rigid frame to protect & support the mesh
- Clean by hand-washing with warm soapy water, wipe gently to prevent damaging the separator

Standard

SCALE ISOLATION ENCLOSURE

URO-M-MODENC MOUSE

Holds cage, scale, waste separation filter + frame, and urine collection pan + support.

- Protects the scale from ambient noise and air currents
- Clear polycarbonate door for easy viewing

URINE COLLECTION PAN
PACK OF 5

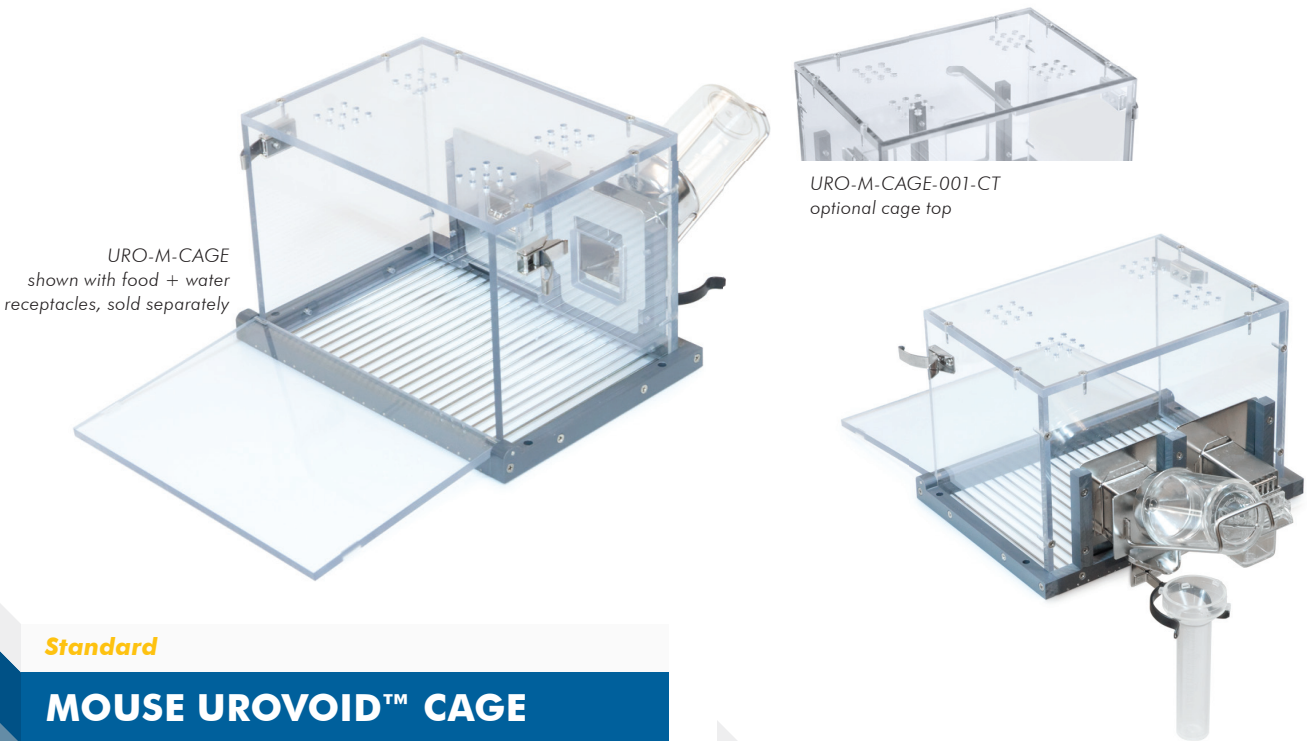
URO-M-PAN MOUSE

- Lightweight, inexpensive, easily cleaned aluminum

URINE COLLECTION PAN
SCALE SUPPORT

URO-PSP MOUSE

- Lightweight rigid support for urine collection pan
- Correctly positions pan under the cage



Standard

MOUSE UROVOID™ CAGE

URO-M-CAGE-001 MOUSE STANDARD TOP

- Additional cages increase experimental throughput by eliminating the time lost cleaning between mice
NOTE: food hopper and water bottle sold separately
- Cage size and ventilation optimal for long term housing requirements, and is large enough to accommodate certain enrichment devices
- Door opens from the front for easy placement and removal of mouse, with water and food on the back-side for an unobstructed view of the mouse
- The floor of the cage is made up of stainless steel rods to allow urine and feces to drop down

Working Area (HxWxL) = 5.2" x 5" x 7"
(13.2 x 12.7 x 17.78 cm)

Grid rods = 0.06" (0.15 cm)
Rod spacing = 0.25" (0.64 cm)

Optional

MOUSE UROVOID™ CAGE
w/MODIFIED TOP

URO-M-CAGE-001-CT MOUSE MODIFIED TOP

Modified top option adds a slit in the top to accommodate tethered animals, making it ideal for optogenetics, IV self administration, or cystometry

Modified top slit = 0.19" W (0.48 cm)

Standard

FOOD HOPPER

URO-M-FOOD MOUSE

- Size discourages nesting behavior
- Feed storage bin and separate spillage bin
- Design minimizes contamination of urine from spilled food.
 - If the mouse gets food crumbs on itself, the crumbs go into the spillage bin, not down onto the pan
- We recommend powdered feed (not pelletized)

Food Bin (HxWxL) = 0.94" x 0.67" x 1.26"
(24 x 17 x 32 mm)

Access Opening = 0.94" (2.4 cm)
Capacity = 0.46 oz (~13 g)

WATER BOTTLE

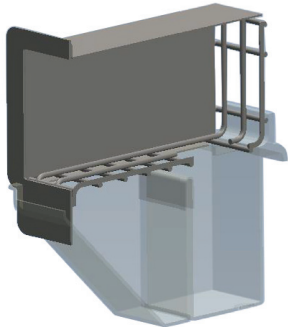
URO-M-WATER MOUSE

- Recessed receptacle for accessing sipper tube
- Receptacle has a sloped base to prevent water from dripping onto collection pan, and instead gets collected in a spill cup below the sipper

Liquid capacity = ~3.04 fl. oz (90 mL)



Water Bottle (cutaway)



Food Hopper (cut-away)

MET-UROS-R



MET-UROS-R

PACKAGE CONTENTS

A = MET-UROS-R

B = MET-UROS-R-L

#	SKU	DESCRIPTION	A	B
1	MET-STAND	Table Top Stand	A	B
1	MET-VOID-001	Urine Collection Flask	A	B
1	SCALE-TOR-AD-520-USB-URO*	Precision Scale w/USB kit	A	B
1	MET-CAGE-R150-300	Metabolic Cage for Rats 150-300g	A	
1	MET-CAGE-R300	Metabolic Cage for Rats >300g		B

*Exact model may vary based on supplier availability

UROVOID™ METABOLIC CAGE
PACKAGES

MET-UROS-R RAT 150-300g

MET-UROS-R-L RAT >300g

- Each metabolic cage is equipped with a precision analytical balance with USB connectivity for easy and accurate void mass quantification
- Specially designed urine collection flask minimizes evaporative loss while maximizing collection volume using a funnel-style mouth
- Ad-lib access to food and water
- Food hopper designed to contain spilled food and minimize caching behavior
- Water bottle designed to minimize water spillage into cage area
- Urine/feces separation funnel maximizes collection of urine from each void and prevents feces from interfering with void mass quantification



SCALE-TOR-AD-520-USB-URO

MET-STAND

MET-VOID-001

ANALYTICAL BALANCE

SCALE-TOR-AD-520-USB-URO **MOUSE+RAT**

- Analytical balance for recording voided urine volume. Contains a USB cable for easy connection to data acquisition computer.

SPECIFICATIONS

Readability = 1 mg

Repeatability (typical) = 0.7 mg

Minimum Weight (USP), Typical: 1.4 g

Linearity = ± 0.002 g

Linearity = 50 g

Settling Time = 1.5 s

Linearity (typical) = 0.6 mg

Resolution = 1 mg

NOTE: exact model may vary, contact sales to confirm current model specifications

TABLETOP STAND

MET-STAND **RAT**

- Stainless steel stand securely holds one cage above the collection flask and scale.

Overall = 16.88" H x 12.38" W
(42.88 x 31.45 cm)

URINE COLLECTION FLASK

MET-VOID-001 **RAT**

- Specially designed with a narrow mouth and wide base to minimize evaporative loss, and a funnel top to facilitate urine collection
- High quality Pyrex® glass

Capacity = 4.23 fl. oz (125 mL)



MET-CAGE-R150-300

METABOLIC CAGE FOR RATS

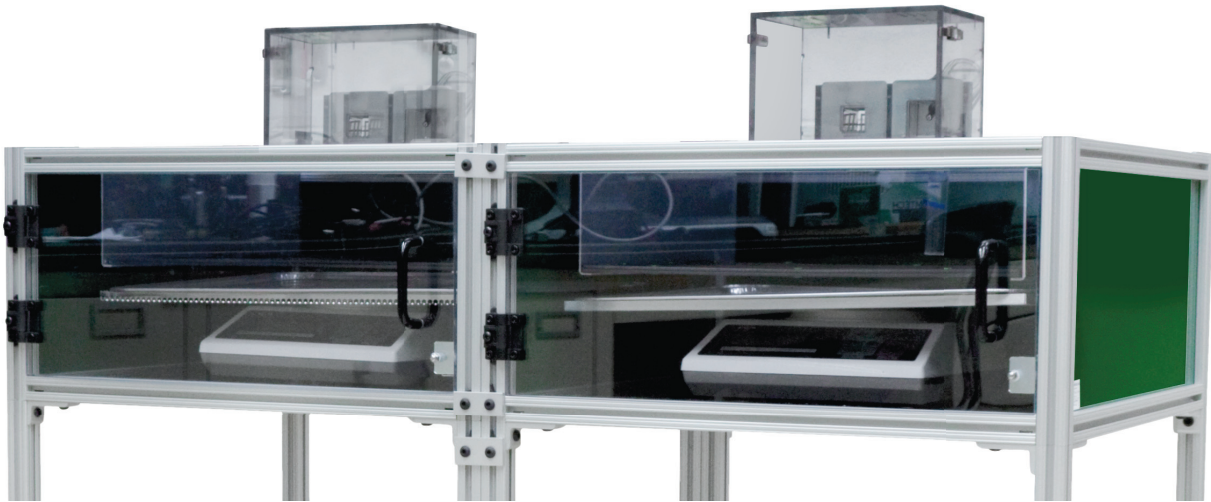
MET-CAGE-R150-300 **RAT** | 150-300g

MET-CAGE-R300 **RAT** | >300g

- High quality Techniplast metabolic cage provides ad-lib food & water access
- Designed to reduce instances where the animal would normally be disturbed
 - Refilling the feeder*
 - Removing components (below the cage floor)
- All components are easily cleaned and autoclavable, and the two-part polycarbonate cage body cleans easily with soap and water
- Feeder designed to discourage animal from sleeping in the dish

- Nonwetting polymethylpentene (PMP) funnel and separating cone separates waste to collect in separate collection tubes for accurate metabolic monitoring without urine wash-over
- Both the water bottle and feeder are designed to prevent spillage into the funnel
- Two-chamber design provides a safe and sanitary environment for acquisition of untainted urine and feces
- Constructed of smooth, transparent polycarbonate to prevent gnawing and noise

*NOTE: designed for use with slurries, powders, or liquids — not pellets



PACKAGE CONTENTS				
A = MET-URO-INT-LT			B = MET-URO-INT	
#	SKU	DESCRIPTION	A	B
1	COM-103LT*	Lenovo Thinkpad E580 Laptop	A	
1	COM-106R3-PC*	Intel i5-9500 3.0 GHz PC		B
1	COM-MONITOR-LCD*	LED Monitor, 19.5" W (49.53 cm)		B
1	SOF-580	UroVoid Software	A	B
1	SOF-581	UroVoid Data Analysis Software	A	B



LAPTOP INTERFACE PACKAGE

FOR UROVOID™ FREQUENCY ANALYSIS SYSTEM

MET-URO-INT-LT MOUSE+RAT LAPTOP

Processor: Intel Core i7-8550U 1.8GHz
Memory (RAM): 16 GB
Hard Drive: 500 GB
Operating System: Windows® 11

NOTE: Computer specifications subject to change, contact sales for current details

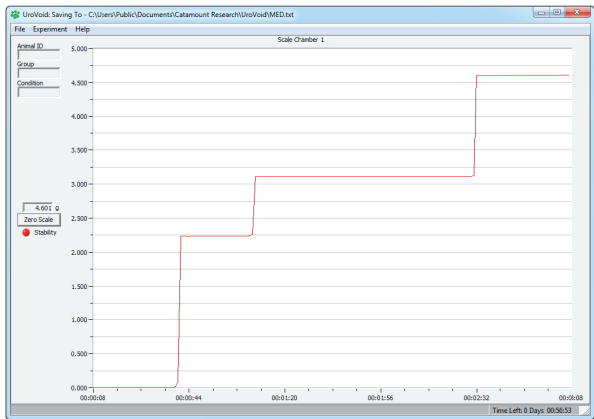
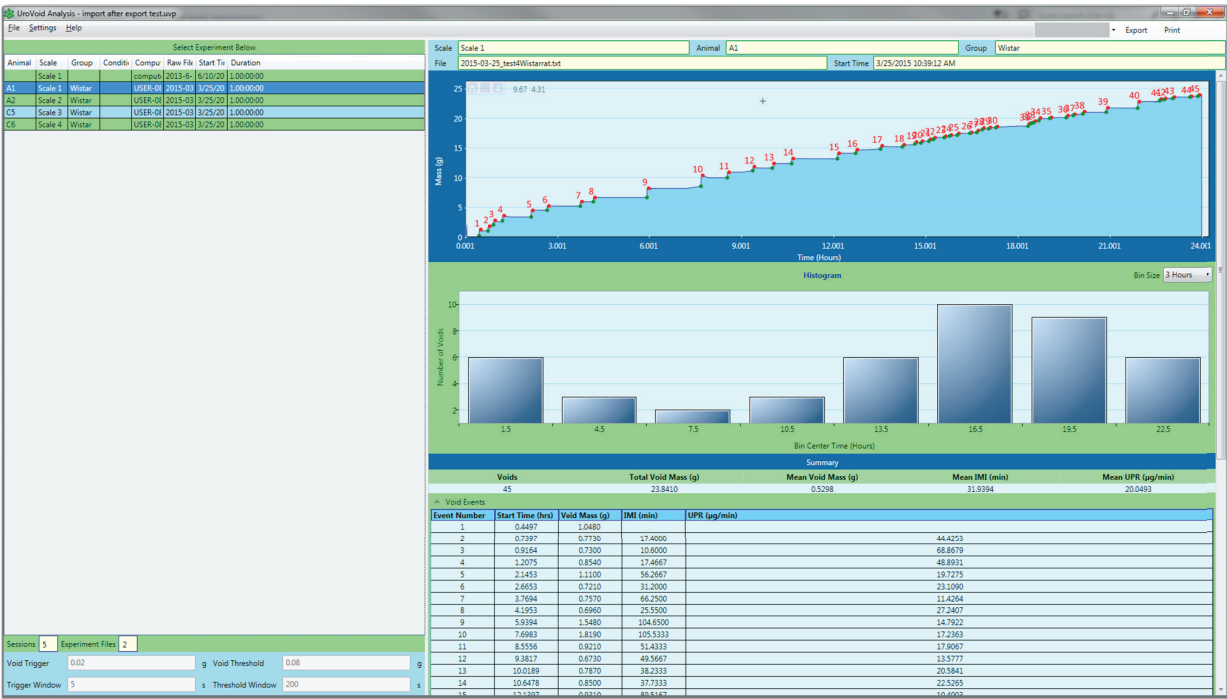
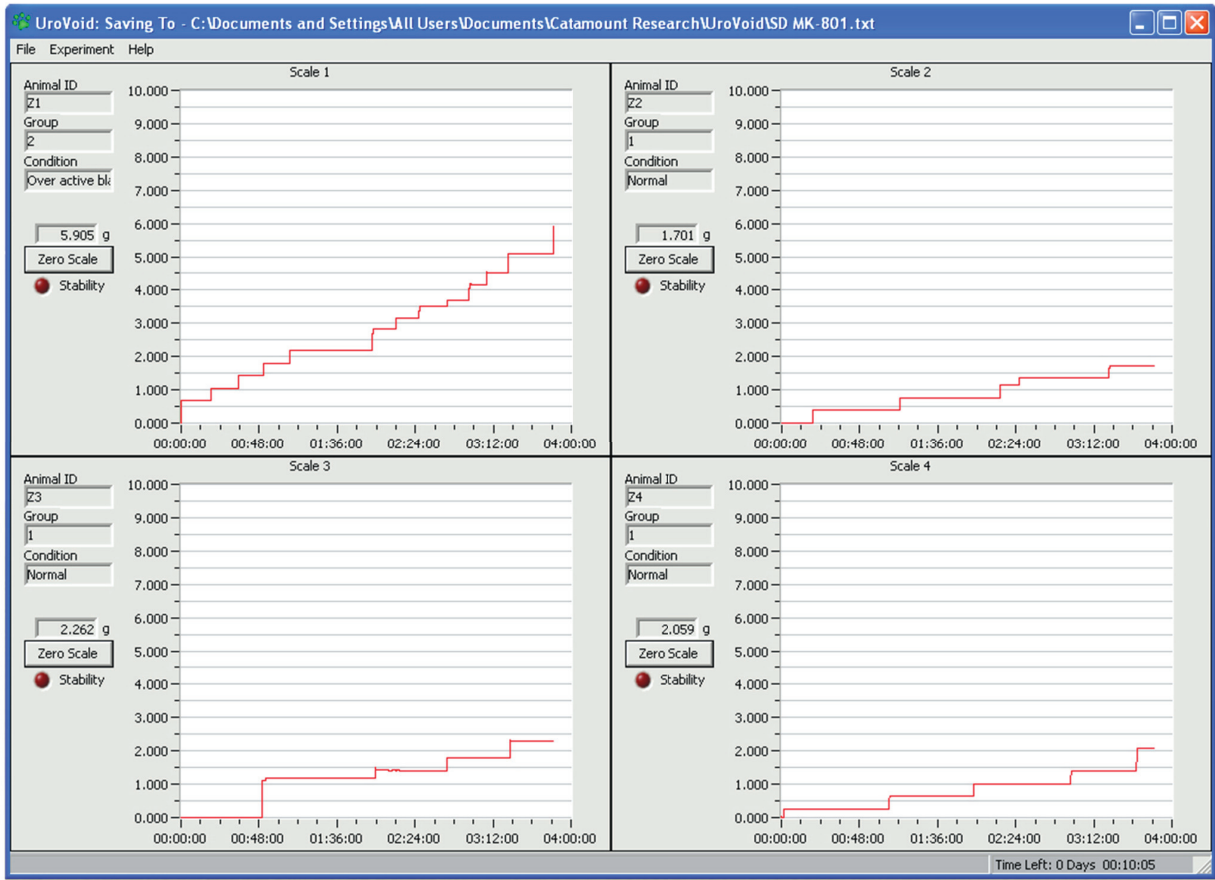
DESKTOP INTERFACE PACKAGE

FOR UROVOID™ FREQUENCY ANALYSIS SYSTEM

MET-URO-INT MOUSE+RAT DESKTOP

Processor: Intel i5-7400 3.5Ghz
Memory (RAM): 16 GB
Hard Drive: 1 TB
Operating System: Windows® 11

NOTE: Computer specifications subject to change, contact sales for current details



UROVOID™ DATA ACQUISITION SOFTWARE

SOF-580 MOUSE+RAT

- Real-time display of urine mass
- Simultaneously record from up to 12 cages
- Record data for up to 40 consecutive days
- Keep track of:
 - Animal ID
 - Group
 - Condition

COMPUTER REQUIREMENTS

- Windows 7 or newer

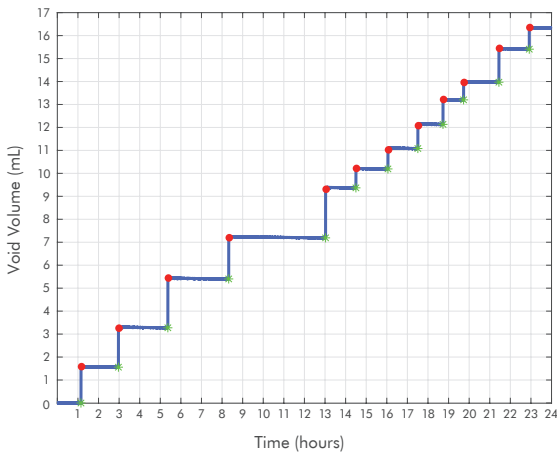
UROVOID™ DATA ANALYSIS SOFTWARE

SOF-581 MOUSE+RAT

- Detects void mass and frequency based on user-defined parameters
- The Voiding Micturogram™ (VMG) graphically displays void events, identified by a number, with the baseline and peak indicated
- Void histogram with user-defined bin times
- Event log summarizes for each void:
 - Start Time
 - Void Mass
 - Intermicturition Interval (IMI)
 - Urine Production Rate (UPR)
- Data can be exported to Excel (or other similar programs) for further analysis and graphing

COMPUTER REQUIREMENTS

- Windows 7 or newer





p: 802.527.9724 | f: 802.524.2110 | www.med-associates.com | e: sales@med-associates.com